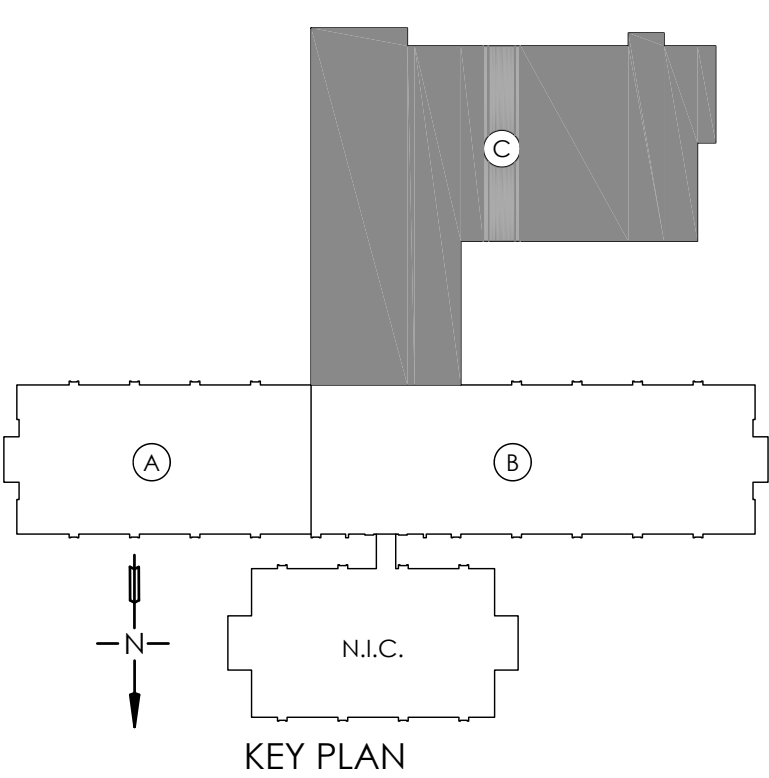
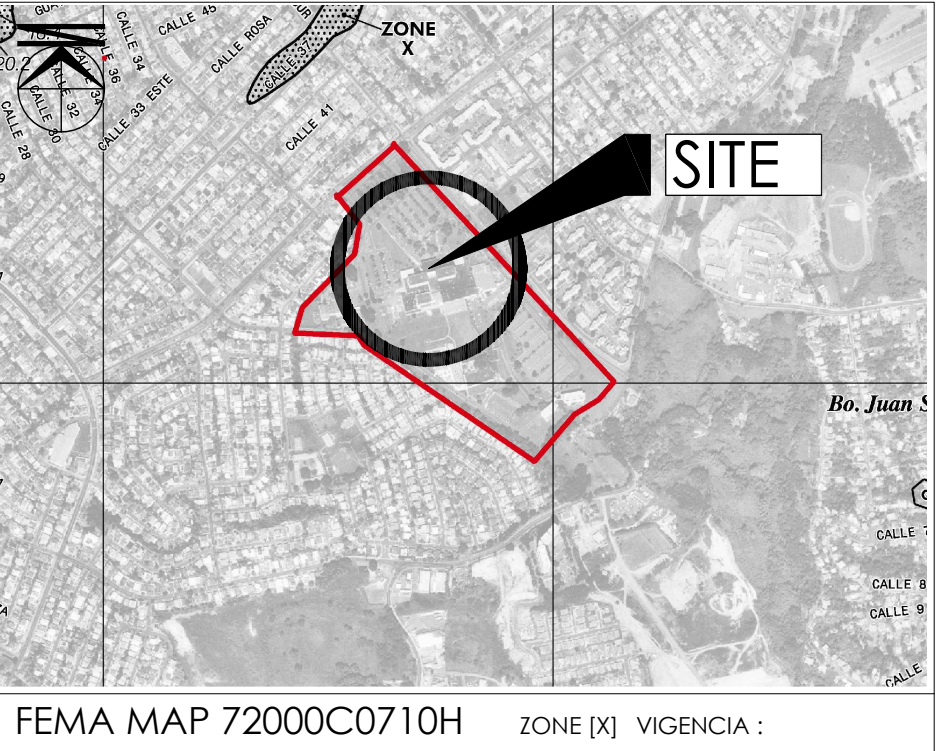
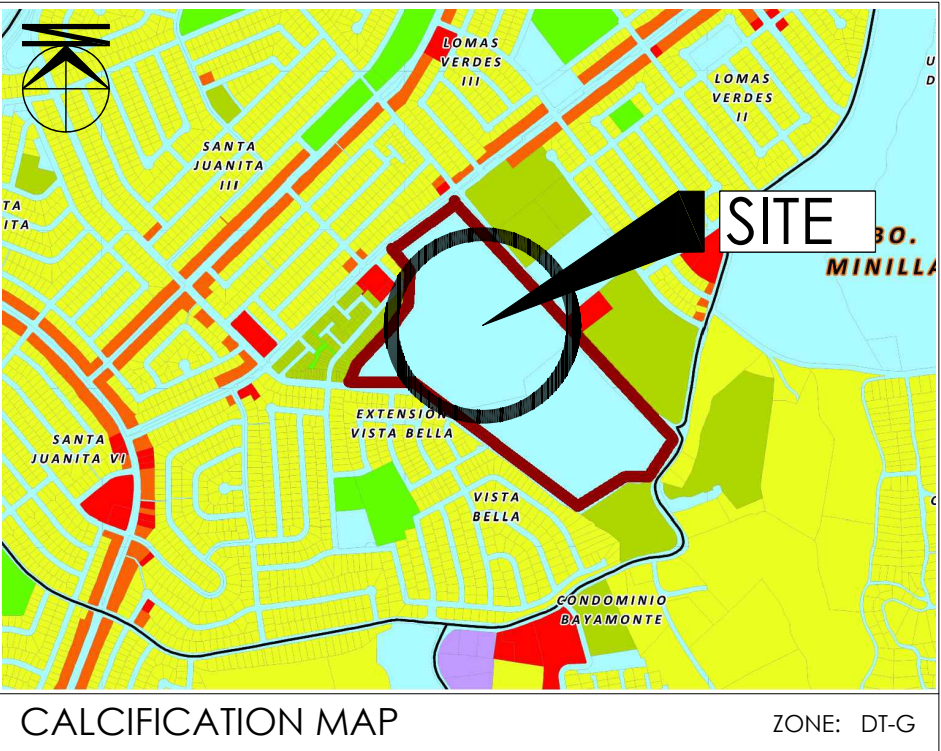
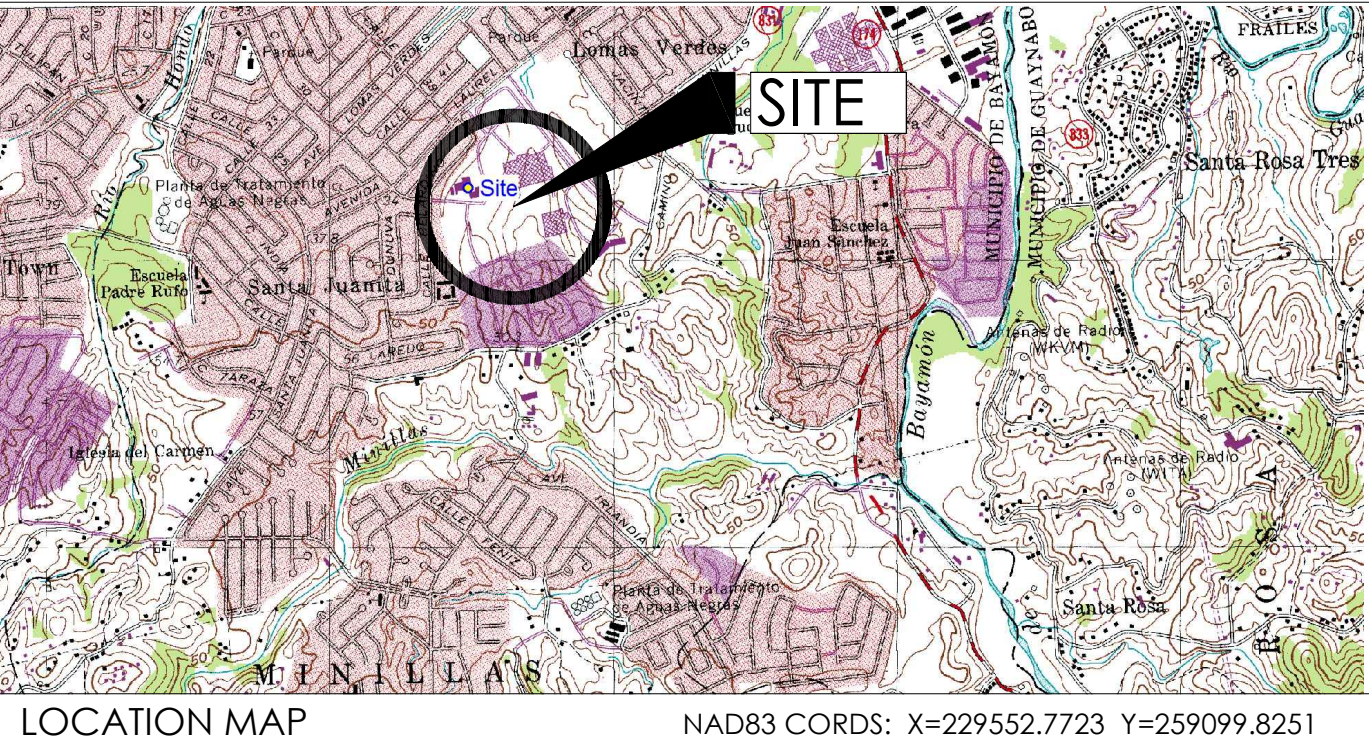


DEMOLITION

HOSPITAL UNIVERSITARIO DR. RAMON RUIZ ARNAU

Urb. Santa Juanita, Laurel Ave., Int. Street No. 24, Minillas Neighborhood, Bayamón, Puerto Rico

PARTIAL SECOND FLOOR



DATE: 11-30-2022

DRAWN BY: R.R.

APPROVED BY: J.C.

SCALE: AS NOTED

DEPARTAMENTO DE SALUD

PROJECT: HOSPITAL UNIVERSITARIO DR. RAMON RUIZ ARNAU
PARTIAL SECOND FLOOR RENOVATIONS
BAYAMON, P.R.

SHEET TITLE: EXISTING PARTIAL SECOND FLOOR LAYOUT (C)
EXISTING ARCHITECTURAL DISTRIBUTION PLAN

Javier Castillo

ARCHITECT

113016-632-04

113016-632-04

113016-632-04

113016-632-04

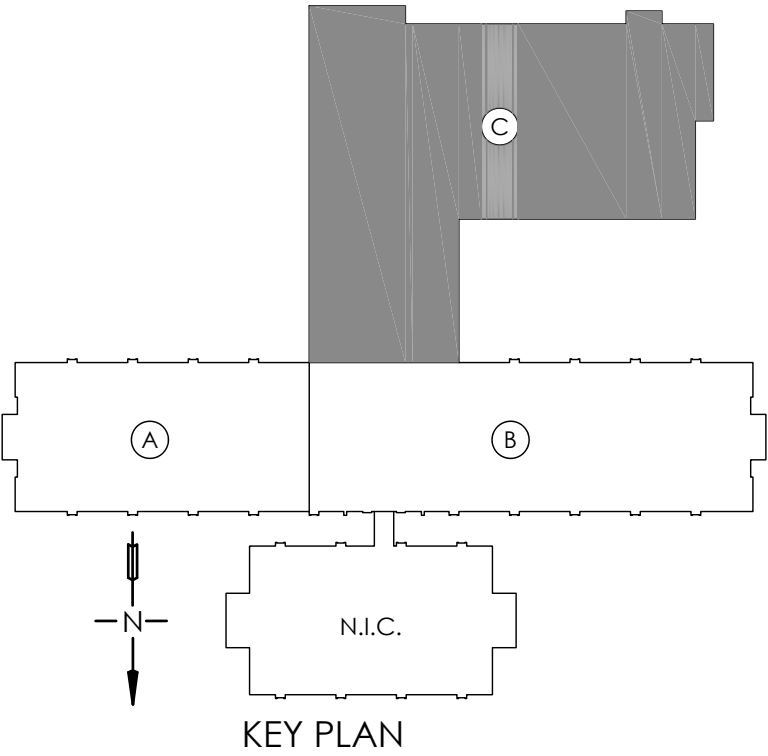
DRAWING NUMBER

TI.001

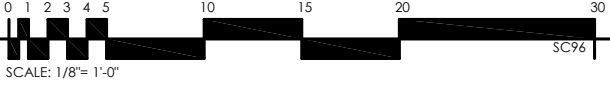


LEGEND:

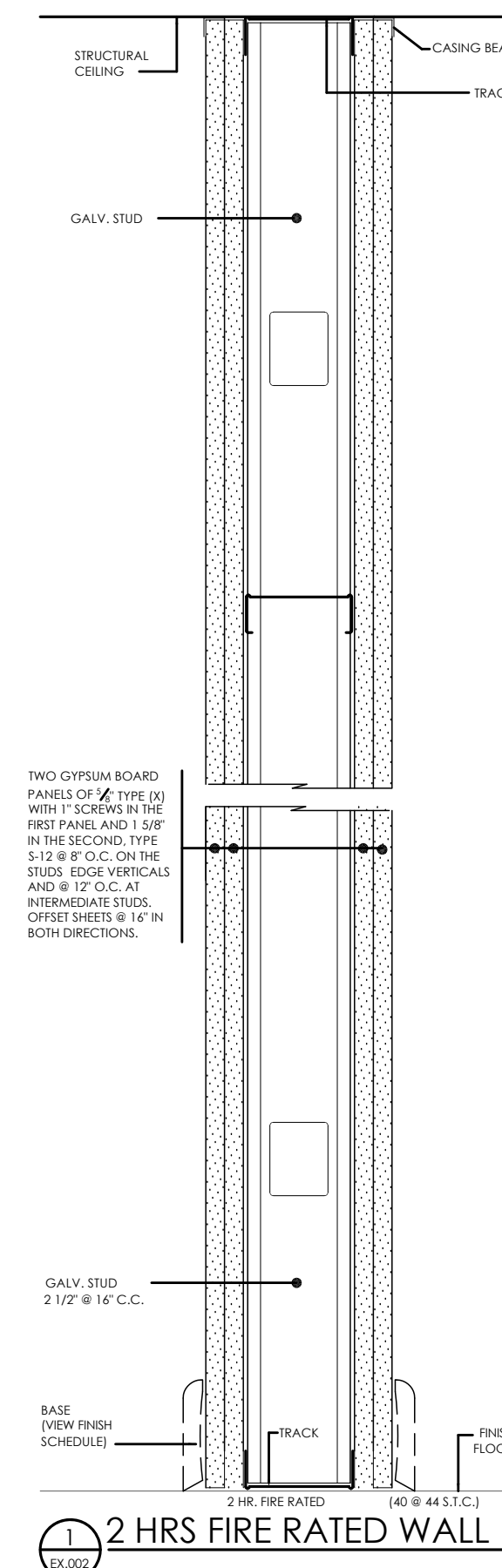
- NEW REINFORCED CONCRETE WALL
- NEW CONCRETE BLOCK WALL
- EXISTING WALL
- WALL TO BE DEMOLISHED
- NEW GYPSUM BOARD WALL
- ROOM IDENTIFICATION REFERS TO ROOM FINISH SCHEDULE REFERS TO ROOM ZONE
- SYMBOL FOR NEW DOOR INDICATES DOOR NUMBER
- SYMBOL FOR NEW WINDOW REFERS TO WINDOW SCHEDULE
- INDICATE BUILDING SECTION INDICATES SHEET WHERE SECTION IS DRAWN
- INDICATES PARTIAL SECTION INDICATES SHEET WHERE PARTIAL SECTION IS DRAWN
- INDICATES NEW ELEVATION INDICATES SHEET WHERE ELEVATION IS DRAWN
- INDICATES NEW WALL SECTION INDICATES SHEET WHERE WALL SECTION IS DRAWN
- INDICATES EXISTING ELEVATION
- INDICATES EXISTING WALL SECTION
- INDICATES DETAIL NUMBER INDICATES SHEET WHERE DETAIL IS DRAWN
- INDICATES STRUCTURAL DETAILS INDICATES SHEET WHERE WALL STRUCTURAL DETAILS IS DRAWN
- INDICATES FINISH MATERIAL
- INDICATES CORE MATERIAL
- INDICATES INTERIOR ELEVATIONS
- INDICATES STEEPS
- INDICATES RAMP
- INDICATES NEW ELEVATION
- INDICATES EXISTING ELEVATION
- INDICATES EQUIPMENT ELEVATION
- REVIEW OR REVISION
- N.I.C. NOT INCLUDED IN CONTRACT



ARCHITECTURAL DISTRIBUTIONS
EXISTING PARTIAL SECOND FLOOR LAYOUT



DATE: 11/30/2022	DRAWN BY: R.R.	APPROVED BY: J.C.	SCALE: AS NOTED
DESCRIPTIONS			
DATE			
NO.			
DEPARTAMENTO DE SALUD			
PROJECT: HOSPITAL UNIVERSITARIO DR. RAMON RUIZ ARNAU PARTIAL SECOND FLOOR RENOVATIONS BAYAMON, P.R.		SHEET TITLE: EXISTING PARTIAL SECOND FLOOR LAYOUT (C) EXISTING ARCHITECTURAL DISTRIBUTION PLAN	
DRAWING NUMBER EX.001			



- DEMOLITION
EXISTING PARTIAL SECOND FLOOR LAYOUT
-
- 0 1 2 3 4 5 10 15 20 30
30'-0" 10'-0" 10'-0" 30'-0"

	DATE: 11-30-2022				
	DRAWN BY:				
	R.R.				
	APPROVED BY:				
	J.C.				
	SCALE: AS NOTED				
<p>PROJECT: HOSPITAL UNIVERSITARIO DR. RAMON RUIZ ARNAU PARTIAL SECOND FLOOR RENOVATIONS BAYAMON, P.R.</p> <p>SHEET TITLE: EXISTING PARTIAL SECOND FLOOR LAYOUT (C) EXISTING ARCHITECTURAL DISTRIBUTION PLAN</p>					
<div style="text-align: center;"> <p>Javier Castillo CONSULTANT ARCHITECTURE ARCHITECTS 800-799-6233 / 787-344-7970 ext. 122</p> </div>					
DRAWING NUMBER					
EX.002					

C:\Users\ARQUITECTURA\OneDrive - Delta Yarela, Rosa, Kazzari\1\PROYECTOS_GS\0301.SALA OFICINAS\PLANOS FINALES\2.4-2023 HUBRA Second Floor DEMOLITION.dwg



NOTES:

SCOPE OF WORK
THE CONTRACTOR SHALL REMOVE AND DISPOSE ALL EXISTING ITEMS IN PROJECT LIMIT AS INDICATED IN THE DEMOLITION PLAN.

DEMOLITION SUBMITTALS
CONTRACTOR SHALL SUBMIT PRIOR TO BID PROPOSAL, THE METHODOLOGY AND PROCEDURE TO THE DEMOLITION ACTIVITY. SUBMITTAL SHALL INCLUDE THE DATE, HOUR, SAFETY MEASURE, AND COORDINATION WITH OWNER, TO PROTECT THE AREAS NOT INCLUDED IN THE SCOPE OF THE PROJECT.

INTERPRETATION
ANY DISCREPANCY BETWEEN DRAWINGS AND SPECIFICATIONS IN ANY OTHER TRADE SHALL BE REFER TO THE OWNER REPRESENTATIVE FOR CLARIFICATION OF THE INTENTION PRIOR TO START THE WORK.

ENVIRONMENTAL AWARENESS
THE CONTRACTOR SHALL INSPECT THE PROJECT AREA CONTINUOUSLY IN ORDER TO SEE IF ANY MATERIAL OR EQUIPMENT CAN BE CONSIDERED AS ENVIRONMENTAL OR A SAFETY HAZARD. IF ANY MATERIAL OR EQUIPMENT IS FOUND CONTRACTOR SHALL STOP THE DEMOLITION AND REPORT IMMEDIATELY TO THE OWNER REPRESENTATIVE TO RECEIVE INSTRUCTIONS.

COORDINATION
PRIOR TO START THE DEMOLITION PHASE THE CONTRACTOR SHALL DO AN SPECIAL COORDINATION WITH THE OWNER OR ITS REPRESENTATIVE IN ORDER NOT TO DISRUPT THE OPERATION OF THE AREA PRESENTLY USED.

CONTRACTOR SHALL CONSIDER ANY REQUIRED OVERTIME IN HIS BID TO ACCOMPLISH THE JOB.

DISPOSITION
ANY EXISTING PIPES AND DUCTS TO BE REMOVED OR ABANDONED IN PLACES SHALL BE PROPERLY WASTE AND/OR CAPPED AT A POINT WHERE THEY WILL NOT OBSTACLE THE NEW CONSTRUCTION. THE FUTURE OPERATION OF THE AREAS OR AS REQUESTED BY OWNER.

EQUIPMENT REMOVED SHALL BE DISPOSED OFF SITE AT HIS COST TO THE OWNER. THE CONTRACTOR SHALL PAY ANY FEE OR OBTAIN ANY PERMIT REQUIRED FOR DISPOSITION.

EQUIPMENT TO BE SAVED AS REQUIRED BY OWNER MUST BE PROPERLY PROTECTED AND STORED SEPARATELY IN THE SPACE DESIGNATED BY THE OWNER.

REPAIRING
THE CONTRACTOR SHALL REPAIR ALL REMAINING VOIDS ON ALL EXISTING PLASTER AFTER DEMOLITION OF WALL, DOOR FRAME REMOVAL, AND FIXED GLASS FRAME AS INDICATED IN DEMOLITION PLAN.

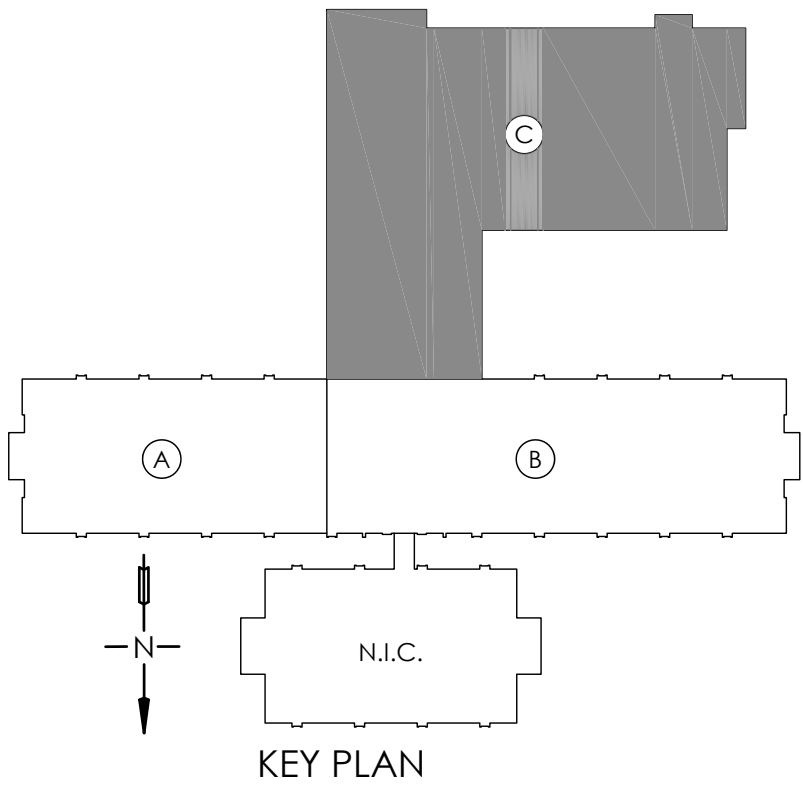
CLEANING
THE CONTRACTOR SHALL REMOVE HIS CONSTRUCTION DEBRIS FROM THE PROJECT SITE PERIODICALLY AND DISPOSE OF IT PROPERLY ACCORDING TO CODES AND RULES OF THE SOLID WASTE AUTHORITY, THE PUBLIC SERVICE COMMISSION, ENVIRONMENTAL QUALITY BOARD AND OTHER GOVERNMENT AGENCIES RELATED IN ORDER TO REDUCE FIRE HAZARDS OR STRUCTURAL LOADING TO A MINIMUM. NO HAZARDOUS WASTE OR CONSTRUCTION DEBRIS OR COMBUSTIBLE MATERIALS WILL BE ALLOWED AT THE PROJECT SITE.

ENVIRONMENTAL PROTECTION
UNDER ANY CIRCUMSTANCES, THE CONTRACTOR DURING THE CONSTRUCTION ACTIVITY, SHOULD INQUIRE IN ANY ENVIRONMENTAL VIOLATION, AND IF SITUATION OCCURS, THE CONTRACTOR SHALL PAY AND RESTORE ANY DAMAGE AREA. THE COST OF THIS CIRCUMSTANCES SHALL BE COVERED BY THE CONTRACTOR WITHOUT ANY CHANGE ORDER TO CONTRACT FOR THIS PROJECT.

EQUIPMENT PROTECTION
THIS CONTRACTOR IS RESPONSIBLE FOR THE PROTECTION OF ALL EXISTING EQUIPMENT, ROOFING SYSTEM AND WALLS IN THE AREA WHERE THE DEMOLITION IS TO BE DONE. IF ANY EQUIPMENT OR MATERIAL IS DAMAGED DURING THE DEMOLITION ACTIVITY, THE GENERAL CONTRACTOR SHALL REPLACE THE EQUIPMENT OR MATERIAL, EQUAL TO THE DAMAGED ONES. THE COST OF THIS REPLACEMENT SHALL BE COVER BY THE GENERAL CONTRACTOR.

LEGEND:

- 1 DOOR AND JAMB TO BE REMOVED AND DISPOSE THE MATERIAL.
- 2 WINDOWS OR FIXED GLASS TO BE REMOVED AND FRAME AND DISPOSE THE MATERIAL.
- 3 WATER CLOSET TO BE REMOVED AND DISPOSE THE MATERIAL.
- 4 URINAL TO BE REMOVED AND DISPOSE THE MATERIAL.
- 5 LAVATORY AND FITTING TO BE REMOVED AND DISPOSE THE MATERIAL.
- 6 SHOWER AND FITTINGS TO BE REMOVED AND DISPOSE THE MATERIAL.
- 7 HAND SINK AND FITTINGS TO BE REMOVED AND DISPOSE THE MATERIAL.
- 8 UTILITY SINK AND FITTINGS TO BE REMOVED AND DISPOSE THE MATERIAL.
- 9 SINK AND FITTINGS TO BE REMOVED AND DISPOSE THE MATERIAL.
- 10 SURGICAL SCRUBS SINK AND FITTINGS TO BE REMOVED AND DISPOSE THE MATERIAL.
- 11 SOLED UTILITY SINK AND FITTINGS TO BE REMOVED AND DISPOSE THE MATERIAL.
- 12 TOILET PARTITIONS TO BE REMOVED AND DISPOSE THE MATERIAL.
- 13 CABINETS OR COUNTERS TO BE REMOVED AND DISPOSE THE MATERIAL.
- 14 METAL LOCKERS TO BE REMOVED AND DISPOSE THE MATERIAL.
- 15 ALL WOOD PARTITIONS AND GLASS TO BE REMOVED AND DISPOSE THE MATERIAL.
- 16 WALL TO BE REMOVED AND DISPOSE THE MATERIAL.
- 17 TOILET ACCESSORIES TO BE REMOVED ND DISPOSE THE MATERIAL.
- 18 ALL WALL CERAMIC TILE TO BE REMOVED AND DISPOSE THE MATERIAL.
- 19 ALL FINISH FLOOR TO BE REMOVED AND DISPOSE THE MATERIAL.
- 20 ALL ACOUSTICAL TILE AND SUSPENDED SYSTEM TO BE REMOVED AND DISPOSE THE MATERIAL.
- 21 ALL GYPSUM BOARD CEILING AND FASCIAS TO BE REMOVED AND DISPOSE THE MATERIAL.
- 22 ALL ELECTRICAL COMPONENTS TO BE REMOVED AND DISPOSE THE MATERIAL.
- 23 ALL DUCTS, SUPPLY AND RETURN COMPONENTS TO BE REMOVED AND DISPOSE THE MATERIAL.
- 24 PLUMBING COMPONENTS TO BE REMOVED AND DISPOSE THE MATERIAL.
- 25 MEDICAL EQUIPMENT TO BE REMOVED ND DISPOSE THE MATERIAL.



FLOOR FINISHES DEMOLITION PLAN
EXISTING PARTIAL SECOND FLOOR LAYOUT
SCALE: 1/8" = 1'-0"

DATE: 11-30-2022	DESCRIPTIONS	NO.	DATE	SCALE: AS NOTED
DRAWN BY: R.R.				
APPROVED BY: J.C.				
DEPARTAMENTO DE SALUD				
PROJECT: HOSPITAL UNIVERSITARIO DR. RAMON RUIZ ARNAU PARTIAL SECOND FLOOR RENOVATIONS BAYAMON, P.R.				
SHEET TITLE: EXISTING PARTIAL SECOND FLOOR LAYOUT (C) EXISTING ARCHITECTURAL DISTRIBUTION PLAN				
DRAWING NUMBER: EX.003				

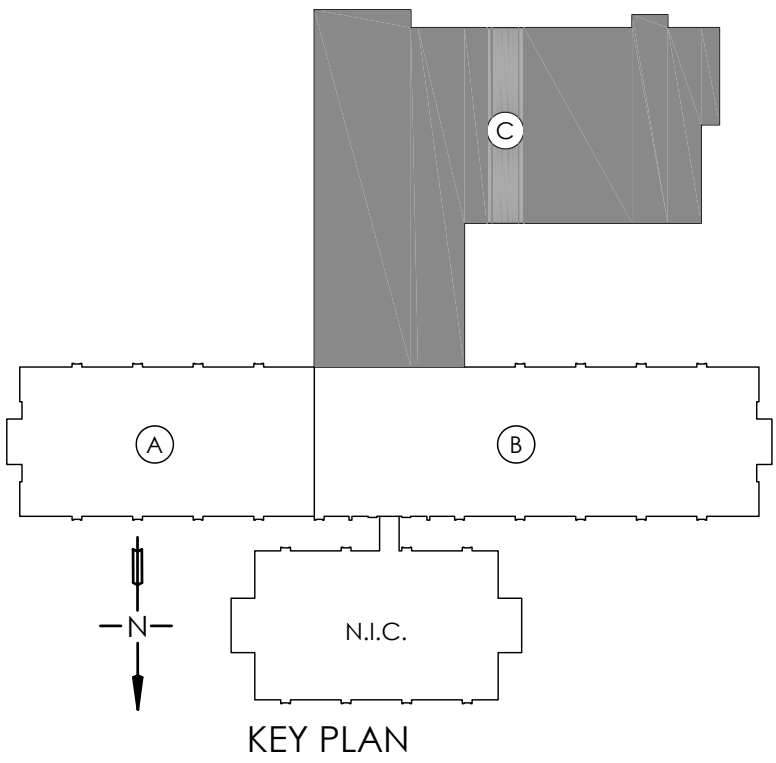


NOTES:

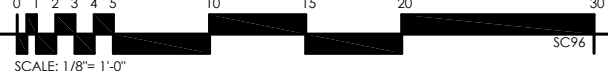
- A. REGARDING ELECTRICITY, ALL COMPONENTS WILL BE REMOVED, UNDERSTOOD LAMPS, RECEPTACLES, PIPES, BOXES, PANELS, LIGHTS, SWITCHES, AMONG OTHERS, EXCEPT THE MAIN TUBING AND MAIN FEEDERS.
- B. FOR ELECTRICAL DEMOLITION, THE CONTRACTOR SHOULD COORDINATE ALL WORKS WITH THE DESIGNER, TO AGREE WHICH COMPONENTS WILL REMAIN AND WHICH WILL BE REMOVED.
- C. FOR MECHANICAL DEMOLITION, THE CONTRACTOR SHOULD COORDINATE ALL WORKS WITH THE DESIGNER, TO AGREE WHICH COMPONENTS WILL REMAIN AND WHICH WILL BE REMOVED.

LEGEND:

- ① DOOR AND JAMB TO BE REMOVED AND DISPOSE THE MATERIAL.
- ② WINDOWS OR FIXED GLASS TO BE REMOVED AND FRAME AND DISPOSE THE MATERIAL.
- ③ WATER CLOSET TO BE REMOVED AND DISPOSE THE MATERIAL.
- ④ URINAL TO BE REMOVED AND DISPOSE THE MATERIAL.
- ⑤ LAVATORY AND FITTINGS TO BE REMOVED AND DISPOSE THE MATERIAL.
- ⑥ SHOWER AND FITTINGS TO BE REMOVED AND DISPOSE THE MATERIAL.
- ⑦ HAND SINK AND FITTINGS TO BE REMOVED AND DISPOSE THE MATERIAL.
- ⑧ UTILITY SINK AND FITTINGS TO BE REMOVED AND DISPOSE THE MATERIAL.
- ⑨ SINK AND FITTINGS TO BE REMOVED AND DISPOSE THE MATERIAL.
- ⑩ SURGICAL SCRUBS SINK AND FITTINGS TO BE REMOVED AND DISPOSE THE MATERIAL.
- ⑪ SOILED UTILITY SINK AND FITTINGS TO BE REMOVED AND DISPOSE THE MATERIAL.
- ⑫ TOILET PARTITIONS TO BE REMOVED AND DISPOSE THE MATERIAL.
- ⑬ CABINETS OR COUNTERS TO BE REMOVED AND DISPOSE THE MATERIAL.
- ⑭ METAL LOCKERS TO BE REMOVED AND DISPOSE THE MATERIAL.
- ⑮ ALL WOOD PARTITIONS AND GLASS TO BE REMOVED AND DISPOSE THE MATERIAL.
- ⑯ ALL WALL CERAMIC TILE TO BE REMOVED AND DISPOSE THE MATERIAL.
- ⑰ ALL FINISH FLOOR TO BE REMOVED AND DISPOSE THE MATERIAL.
- ⑱ ALL ACOUSTICAL TILE AND SUSPENDED SYSTEM TO BE REMOVED AND DISPOSE THE MATERIAL.
- ⑲ ALL GYPSUM BOARD CEILING AND FASCIAS TO BE REMOVED AND DISPOSE THE MATERIAL.
- ⑳ ALL ELECTRICAL COMPONENTS TO BE REMOVED AND DISPOSE THE MATERIAL.
- ㉑ ALL DUCTS, SUPPLY AND RETURN COMPONENTS TO BE REMOVED AND DISPOSE THE MATERIAL.
- ㉒ PLUMBING COMPONENTS TO BE REMOVED AND DISPOSE THE MATERIAL.
- ㉓ MEDICAL EQUIPMENT TO BE REMOVED NO DISPOSE THE MATERIAL.



CEILING DEMOLITION PLAN
EXISTING PARTIAL SECOND FLOOR LAYOUT



PROJECT: HOSPITAL UNIVERSITARIO DR. RAMON RUIZ ARNAU PARTIAL SECOND FLOOR RENOVATIONS BAYAMON, P.R.	SHEET TITLE: EXISTING PARTIAL SECOND FLOOR LAYOUT (C) EXISTING ARCHITECTURAL DISTRIBUTION PLAN		DATE: 11-30-2022
			DRAWN BY: R.R.
DRAWING NUMBER: EX.004	DATE:	NO. 1	APPROVED BY: J.C.
			SCALE: AS NOTED